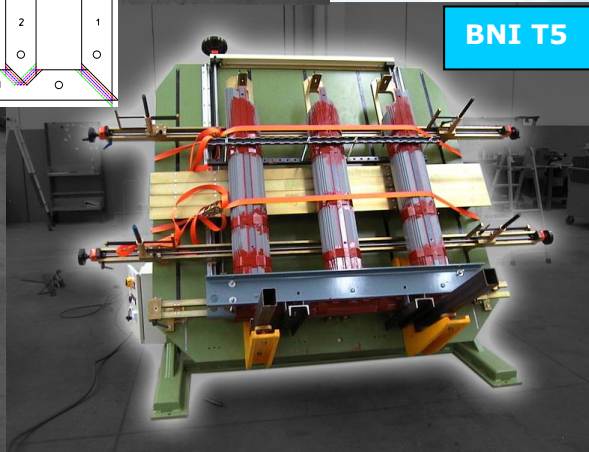
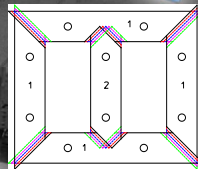
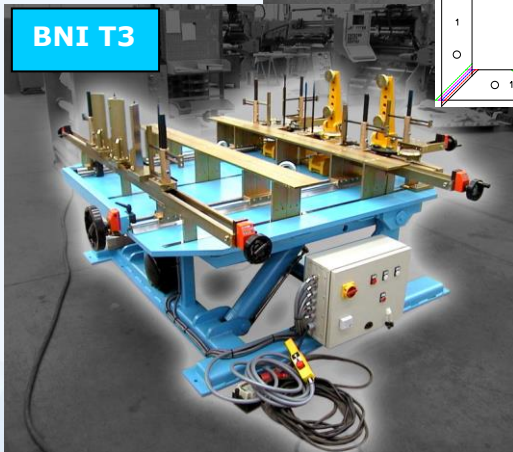
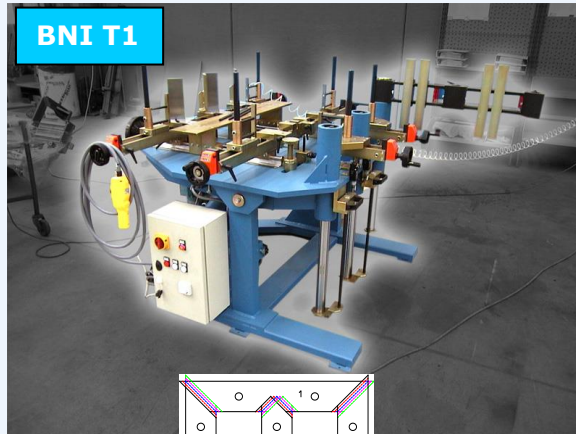




### ASSEMBLY BENCHES FOR TRANSFORMER'S CORE



### TARGET

The BNI allows to assemble main cores for distribution transformer with Step Lap and no Step Lap system, for sheets with holes and not.

The BNI T1 allows to assemble main cores for distribution transformer mainly ranging from 50 to 1.000 Kva, the BNI T3 from 160 to 4.000 Kva and the BNI T5 from 160 to 10.000 Kva.

With the use of the present core assembly benches, the core is assembled without the top leg, to allow the insertion of the transformer coils.

### MAIN FEATURES

The advantages of using the BNI assembly benches result in:

- Fast assembling work, because the operator finds all the necessary positioning references during insertion of the sheets;
- Reduced losses, because core is assembled more precisely and not damaged during tilting and unloading phase;
- Reduce set-up time, by handwheel & measuring instruments.

Different cores can be assembled in the following way:

1. Using central pins for Step Lap reference in sheets with holes
2. Using side guides for references in sheets without holes



### CORE ASSEMBLY BENCHES COMPOSITION

**MAIN MACHINE :**

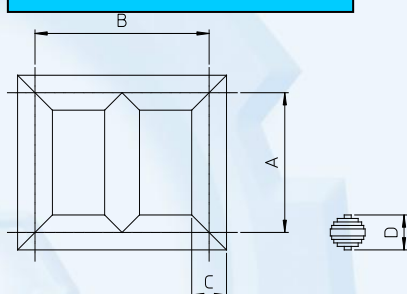
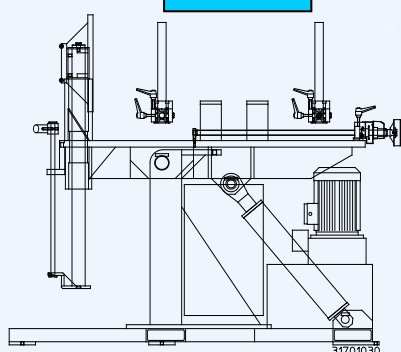
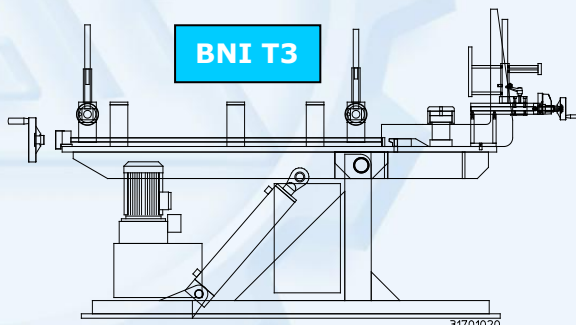
- (a) Vertically pivoting table through hydraulic cylinders
- (b) N. 6 adjustable side guides with measuring instruments
- (c) N. 8 reference pins with height adjustment
- (d) N. 3 top legs reference
- (e) Supporting system to extract completed core after assembly
- (f) Hydraulic unit for tilting
- (g) Control panel

**ACCESSORIES :**

- (1) N. 7 heads (2 for each leg, 1 for central leg and 2 for bottom yoke)

### TECHNICAL DATA

	BNI T1	BNI T3	BNI T5
<b>GENERAL</b>			
Weight of basic machine approx.	1000 Kg	2000 Kg	2500 Kg
<b>CORE DIMENSIONS</b>			
(A) Legs length min/max	320/800 mm	500/1420 mm	500/1620 mm
(B) Jokes length min/max	400/820 mm	400/1470 mm	400/1810 mm
(C) Core width max	200 mm	300 mm	300 mm
(D) Stacking height max	200 mm	300 mm	300 mm
Weight (without top joke) max	1000 Kg	3000 Kg	5000 Kg
<b>CORE FEATURES (Different values upon request)</b>			
Diameter of pins for sheet holes	10 mm	10 mm	10 mm
Displacement between points	7 mm	7 mm	7 mm

**CORE DIMENSIONS****BNI T1****BNI T3****BNI T5**